

1. Slide a spacer (such as Guitar Pick) between display panel and back case.



Figure 1

2. Slide the spacer slowly and separate the display panel and back case. Refer to figure 2.



Figure 2

3. Once display panel and back case separated, please unscrew two small screws at keyboard docking connector as figure 3. After unscrew, then separate display panel and back cover.

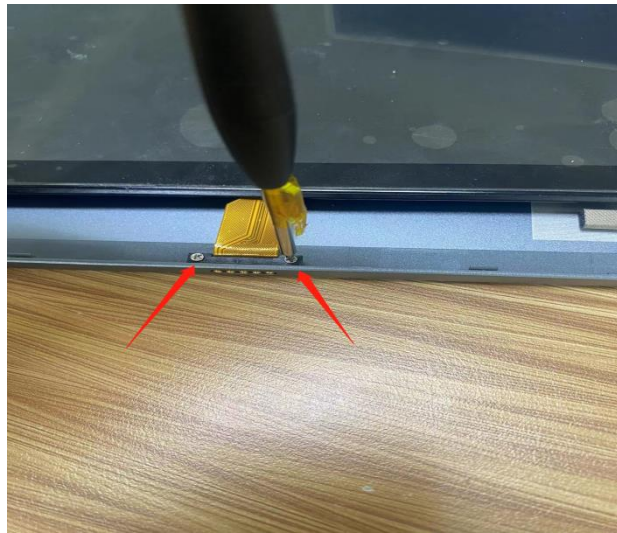


Figure 3

4. To change out the broken display panel, please follow below steps:

4.1: Disconnect mainboard battery, camera, TP, LCD Display, Speaker, mic and WiFi connectors.

4.2 unscrew mainboard, mic frame, camera frame, and speaker frame screws. Refer to red arrows in figure 4.

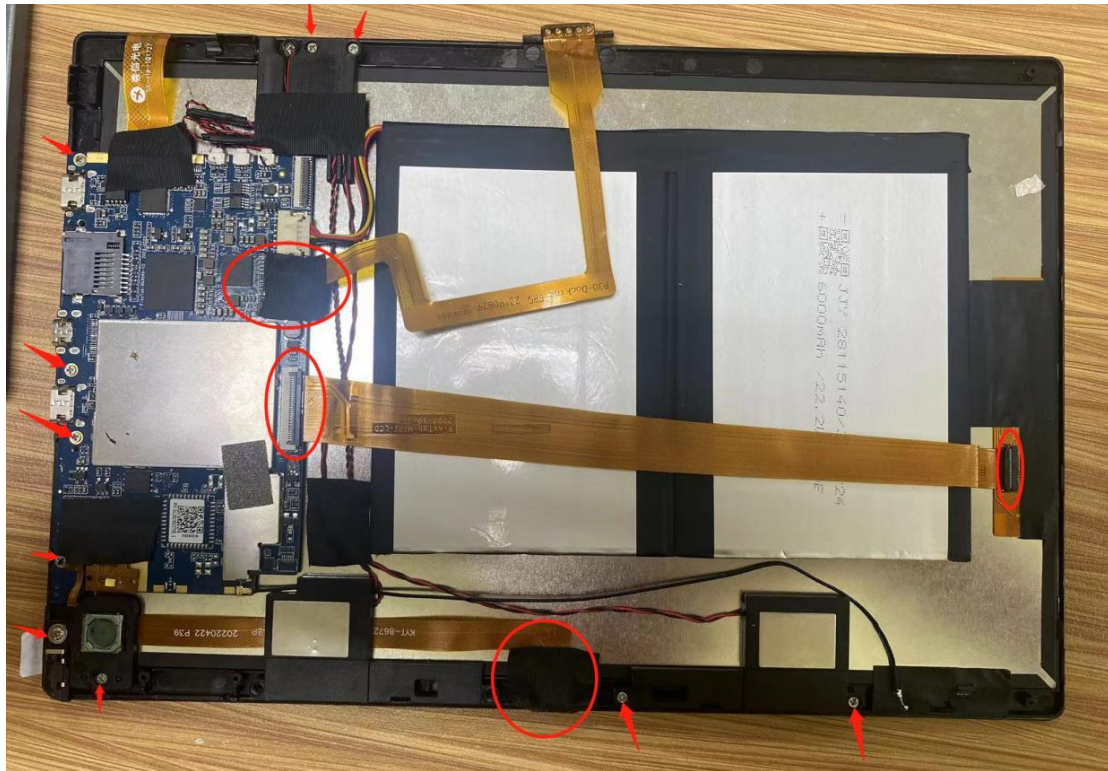


Figure 4

4.3 Separate mic frame, camera frame, speaker frame from display panel.

4.4 There is no need to peel off battery that attach with LCD screen.

4.5 Separate the LCD screen from the display panel. Please note that the TP (Touch Screen Panel) glue with front glass screen together. Replace broken front glass screen/TP together with a new one.



Figure 5